

Workbook : Cirrhosis.

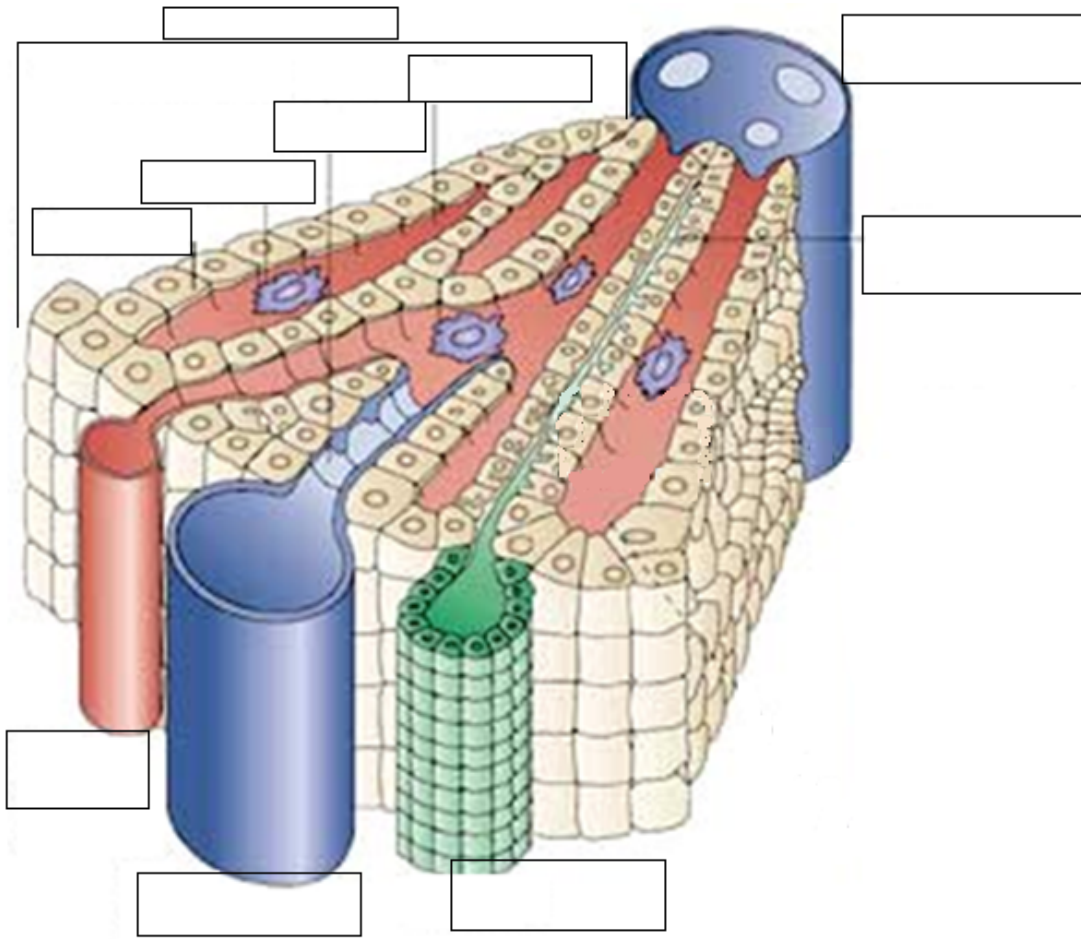
This workbook has been designed to be used in conjunction with the course reading booklet. You are free to complete as few or as many of the tasks as you wish. The workbook can then be added to your CPD portfolio as evidence of your activity. It also provides room for you to reflect your thoughts in relation to this course and your learning experience.

Self-assessment :

1	Describe how the liver receives its supply of oxygenated blood.
2	What is the function of hepatocytes ?

3

Label the diagram :



4

What are sinusoids, and what is their function ?

5	What benefit is there in having a space between the sinusoid and the hepatocyte?
6	Give the functions the of the following cells : Kupffer cell : Stellate cell : Sinusoidal endothelial cell :

7	What is the role of the liver in carbohydrate metabolism ?
8	How is the liver involved in protein metabolism ?

9	Give a definition of 'cirrhosis'.
10	What factors may contribute to the development of cirrhosis ?
11	Describe the pathological changes taking place in the liver which lead to the development of cirrhosis.

12	What is the characteristic visual feature of a cirrhotic liver ?
13	How does excess alcohol intake contribute to liver damage ?

14	What are the clinical features of liver disease ?
15	What are the potential consequences of cirrhosis ?

Reflection.

Take some time to think about the learning that you have completed using this course. Was it useful, was it interesting, was it applicable to your practice? Is there anything in particular you have gained from the course, and does it encourage you to alter your practice? Have you enjoyed it?

These are all questions you should ask yourself before you complete your reflective account below, as these are key points that you need to mention.

How much time have you spent completing this course?	
Did you complete the course on your own, or as part of a learning group?	

Your general reflective account :

Key Learning / Practice points (list up to 5) :

1.

2.

3.

4.

5.

If you feel you have any further comments to make about your learning, please use the space below.